

Thermocouple for High Temperature (With Non-metallic Thermowell)

WR 1 2 - 3 4 5 - 6 **HP** HP (H - High Temperature; P - Stainless steel connection head)

		Type	
1		B	B 0 ~ 1600 °C
		S	S 0 ~ 1300 °C
		K	K Single-element: 0 ~ 1200 °C, Dual-element: 0 ~ 1100 °C
		Single or Dual-element	
2	1	Single-Element	
	2	Dual-Element	
		Mounting	
3	1	No Mounting Fitting	
	9	Special Form	
		Connection head Style	
4	3	Water-proof, IP65	
	4	Explosion-proof, dllBT4, IP65	
	5	Explosion-proof, dllBT6, IP65	
	6	Explosion-proof, dllCT6, IP65	
	7	Intrinsic Safe, ia, ib, IP65	
		OD for Non-metallic Thermowell	
5	1	φ 25 (Thermowell of Double Layer for Style B & S.)	
	2	φ 16 (Thermowell of Monolayer for Style B & S.)	
	3	φ 20 (Thermowell of Monolayer for Style K.)	
		Immersion Length (mm)	
*Material of the Non-metallic Thermowells: Corundum for Style B	6	0150	150
		0200	200
		0250	250
		0300	300
		0400	400
		0500	500
Hi-alumina Clay for Style K & S	6	0750	750
		1000	1000
		1250	1250
		1500	1500
		2000	2000

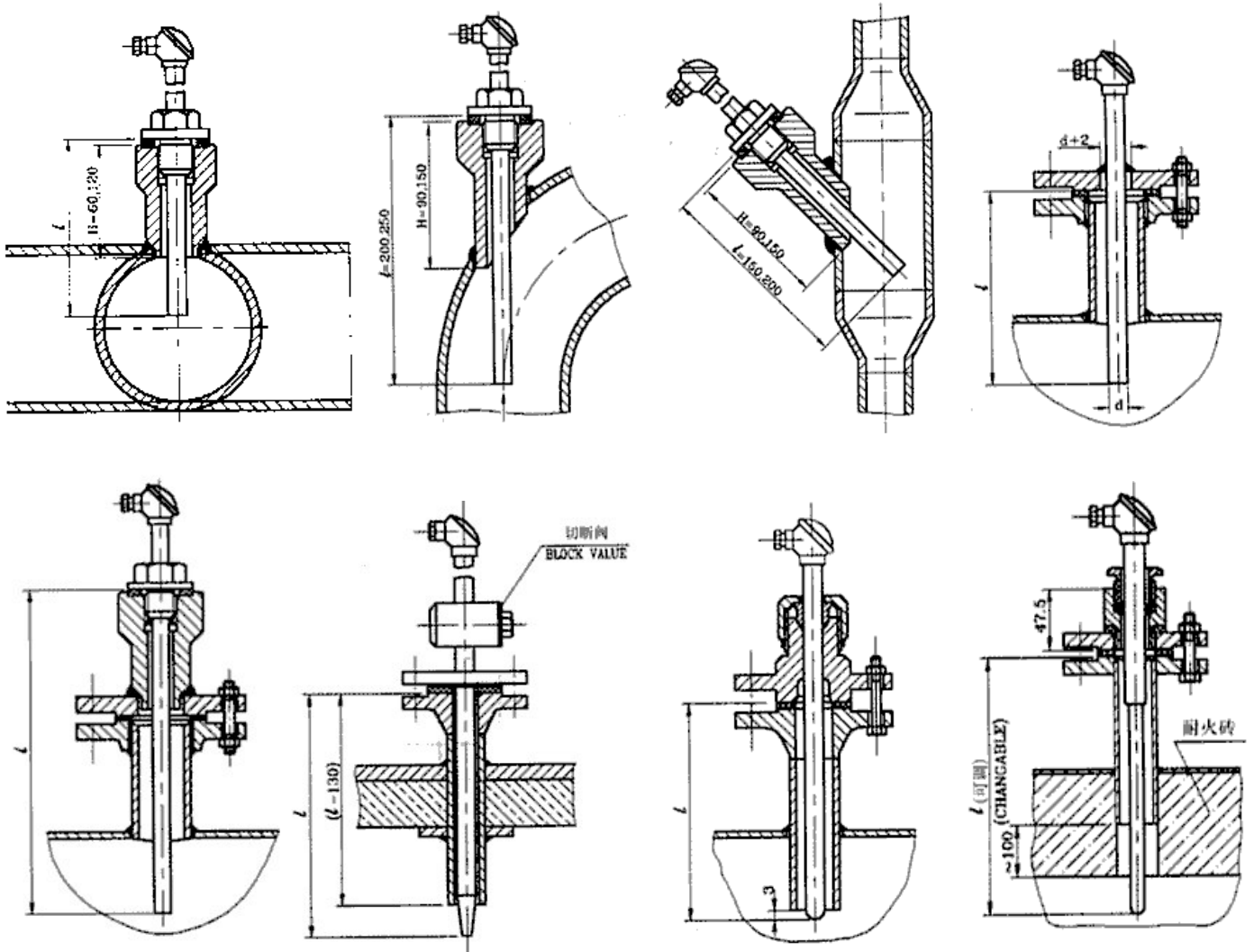
Example: WRB1-132-0750 HP: Thermocouple-Type R-Single element-No mounting fitting-Water-proof IP65-OD=16 mm-Immersion length 750 mm-stainless steel connection head.

* Attention needed when ordering

1. Write product name, model number, specifications (type, OD of Thermowell, immersion length, etc.) quantity, and delivery date.
2. Special requirements, for example, material, pressure rating, connecting style, special applications, etc., can be discussed through by telephone or e-mail.
3. Write your company name, mailing address, post code, telephone number, fax number, e-mail address, ship to address, and contact person for the company or department.
4. Payment method or credit references.

RTD
TC

Mounting Graphics



Armored RTD
Armored TC

