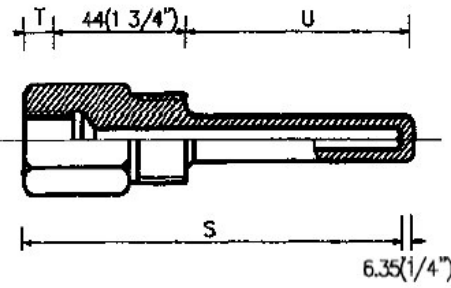
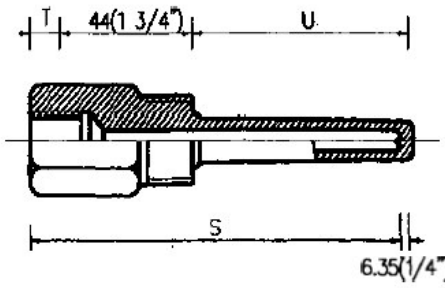


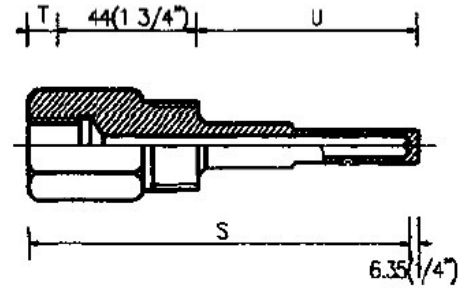
Thermowell Types



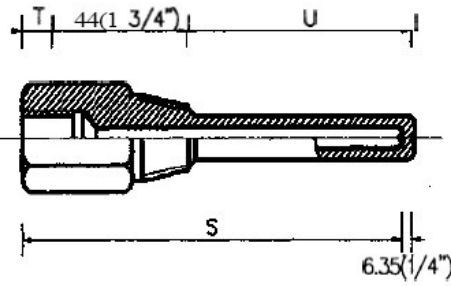
Straight pocket (T), Straight thread connection (G)



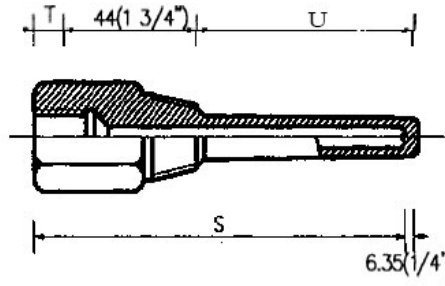
Tapered pocket (P), Straight thread connection (G)



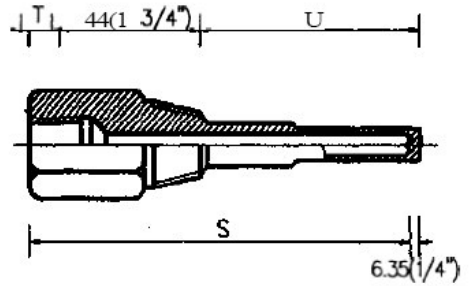
Stepped pocket (S), Straight thread connection (G)



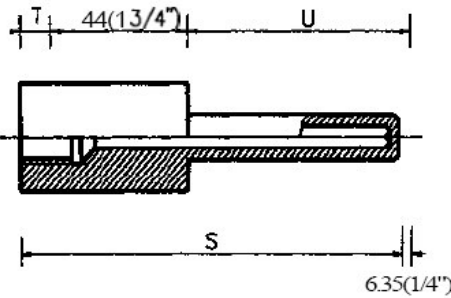
Straight pocket (T), Tapered thread connection (N)



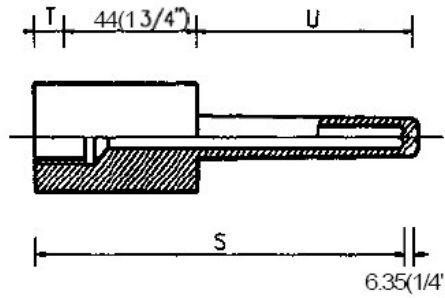
Tapered pocket (P), Tapered thread connection (N)



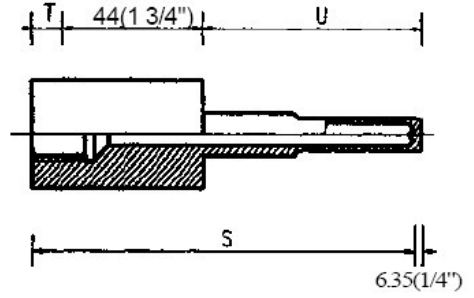
Stepped pocket (S), Tapered thread connection (N)



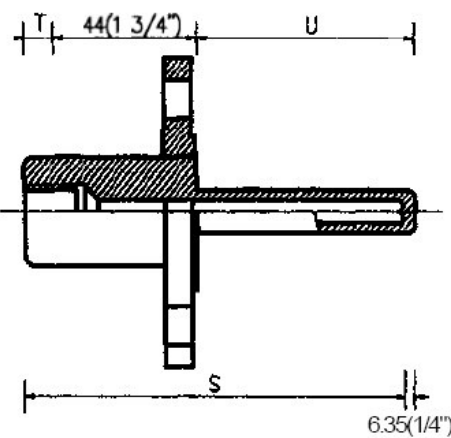
Straight pocket (T), Welding type (W)



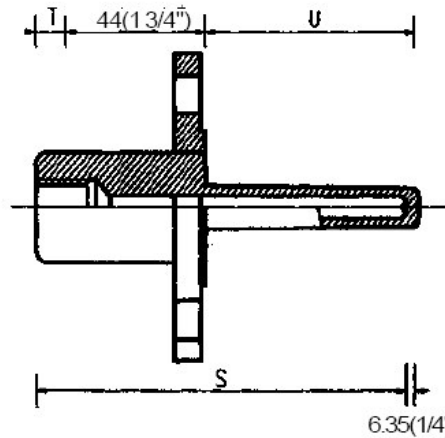
Tapered pocket (P), Welding type (W)



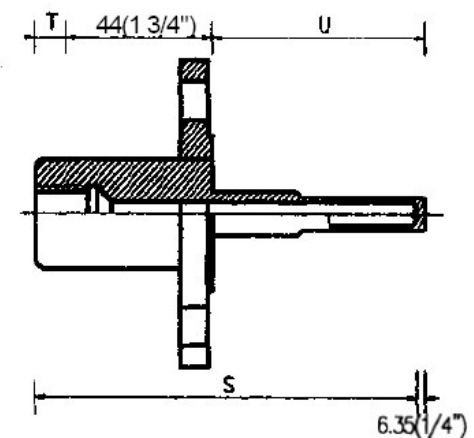
Stepped pocket (S), Welding type (W)



Straight pocket (T), flange connection (F)



Tapered pocket (P), flange connection (F)



Stepped pocket (S), flange connection (F)

U: Thermowell insert length

T: Extension length (to be lengthened where there is insulating coat or other needs)

S (L): Thermometer length (RTD (couple) length in and abroad, bimetal thermometer length abroad.

Minus 20mm (seal gasket) for domestic bimetal thermometer length S(L).