

## **BIMETAL THERMOMETERS BOTTOM CONNECTED**

### **WSS-W CORE EXTRACTABLE PROTECTIVE BIMETAL THERMOMETER**

---

Dial Diameter of 2.4" (60 mm)

Thread M16x1.5

**WSS-311W:** removable outside thread

**WSS-312W:** removable inside thread

**WSS-313W:** fixed thread

Flange

**WSS-314W:** flange, please identify

Dial Diameter of 3.9" (100 mm)

Thread M27x2

**WSS-411W:** removable outside thread

**WSS-412W:** removable inside thread

**WSS-413W:** fixed thread

Flange

**WSS-414W:** flange, please identify

Dial Diameter of 5.9" (150 mm)

Thread M27x2

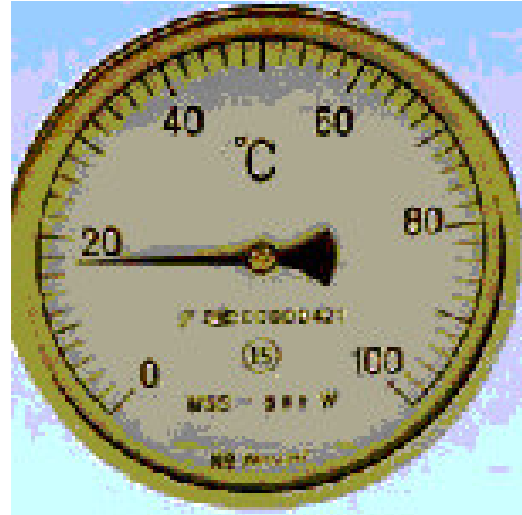
**WSS-511W:** removable outside thread

**WSS-512W:** removable inside thread

**WSS-513W:** fixed thread

Flange

**WSS-514W:** flange, please identify



### **WSSP-W CORE EXTRACTABLE BIMETAL RTD INTEGRAL THERMOMETER**

---

Dial Diameter of 2.4" (60 mm)

Thread M16x1.5

**WSSP-311W:** removable outside thread

**WSSP-312W:** removable inside thread

**WSSP-313W:** fixed thread

Flange

**WSSP-314W:** flange, please identify

Dial Diameter of 3.9" (100 mm)

Thread M27x2

**WSSP-411W:** removable outside thread

**WSSP-412W:** removable inside thread

**WSSP-413W:** fixed thread

Flange

**WSSP-414W:** flange, please identify

Dial Diameter of 5.9" (150 mm)

Thread M27x2

**WSSP-511W:** removable outside thread

**WSSP-512W:** removable inside thread

**WSSP-513W:** fixed thread

Flange

**WSSP-514W:** flange, please identify

## **BIMETAL THERMOMETERS BOTTOM CONNECTED**

### **WSSK(E)Z -W CORE EXTRACTABLE BIMETAL THERMOCOUPLE INTEGRAL THERMOMETER**

---

**K:** With K styled sheathed thermocouple NiCr-NiSi  
**E:** With E styled sheathed thermocouple NiCr-NiCu

Dial Diameter of 2.4" (60 mm)

Thread M16x1.5

**WSSK(E) -311W:** removable outside thread

**WSSK(E) -312W:** removable inside thread

**WSSK(E) -313W:** fixed thread

Flange

**WSSK(E)-314W:** flange, please identify

Dial Diameter of 3.9" (100 mm)

Thread M27x2

**WSSK(E)-411W:** removable outside thread

**WSSK(E)-412W:** removable inside thread

**WSSK(E)-413W:** fixed thread Flange

**WSSK(E)-414W:** flange, please identify

Dial Diameter of 5.9" (150 mm)

Thread M27x2

**WSSK(E)-511W:** removable outside thread

**WSSK(E)-512W:** removable inside thread

**WSSK(E)-513W:** fixed thread

Flange

**WSSK(E)-514W:** flange, please identify