

BIMETAL THERMOMETERS BACK CONNECTED

WSS-W CORE EXTRACTABLE PROTECTIVE BIMETAL THERMOMETER

Dial Diameter of 2.4" (60 mm)

Thread M16x1.5

WSS-301W: removable outside thread

WSS-302W: removable inside thread

WSS-303W: fixed thread

Flange

WSS-304W: flange, please identify

Dial Diameter of 3.9" (100 mm)

Thread M27x2

WSS-401W: removable outside thread

WSS-402W: removable inside thread

WSS-403W: fixed thread

Flange

WSS-404W: flange, please identify

Dial Diameter of 5.9" (150 mm)

Thread M27x2

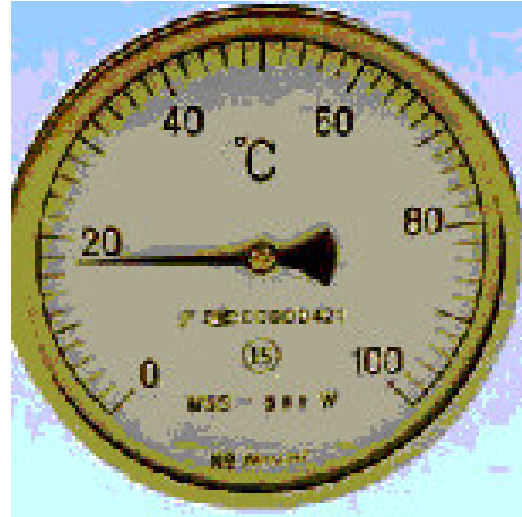
WSS-501W: removable outside thread

WSS-502W: removable inside thread

WSS-503W: fixed thread

Flange

WSS-504W: flange, please identify



WSSP-W CORE EXTRACTABLE BIMETAL RTD INTEGRAL THERMOMETER

Dial Diameter of 2.4" (60 mm)

Thread M16x1.5

WSSP-301W: removable outside thread

WSSP-302W: removable inside thread

WSSP-303W: fixed thread

Flange

WSSP-304W: flange, please identify

Dial Diameter of 3.9" (100 mm)

Thread M27x2

WSSP-401W: removable outside thread

WSSP-402W: removable inside thread

WSSP-403W: fixed thread

Flange

WSSP-404W: flange, please identify

Dial Diameter of 5.9" (150 mm)

Thread M27x2

WSSP-501W: removable outside thread

WSSP-502W: removable inside thread

WSSP-503W: fixed thread

Flange

WSSP-504W: flange, please identify

BIMETAL THERMOMETERS BACK CONNECTED

WSSK(E) -W CORE EXTRACTABLE BIMETAL THERMOCOUPLE INTEGRAL THERMOMETER

K: With K styled sheathed thermocouple NiCr-NiSi

E: With E styled sheathed thermocouple NiCr-NiCu

Dial Diameter of 2.4" (60 mm)

Thread M16x1.5

WSSK(E) -301W: removable outside thread

WSSK(E) -302W: removable inside thread

WSSK(E) -303W: fixed thread

Flange

WSSK(E)-304W: flange, please identify

Dial Diameter of 3.9" (100 mm)

Thread M27x2

WSSK(E)-401W: removable outside thread

WSSK(E)-402W: removable inside thread

WSSK(E)-403W: fixed thread Flange

WSSK(E)-404W: flange, please identify

Dial Diameter of 5.9" (150 mm)

Thread M27x2

WSSK(E)-501W: removable outside thread

WSSK(E)-502W: removable inside thread

WSSK(E)-503W: fixed thread

Flange

WSSK(E)-504W: flange, please identify

